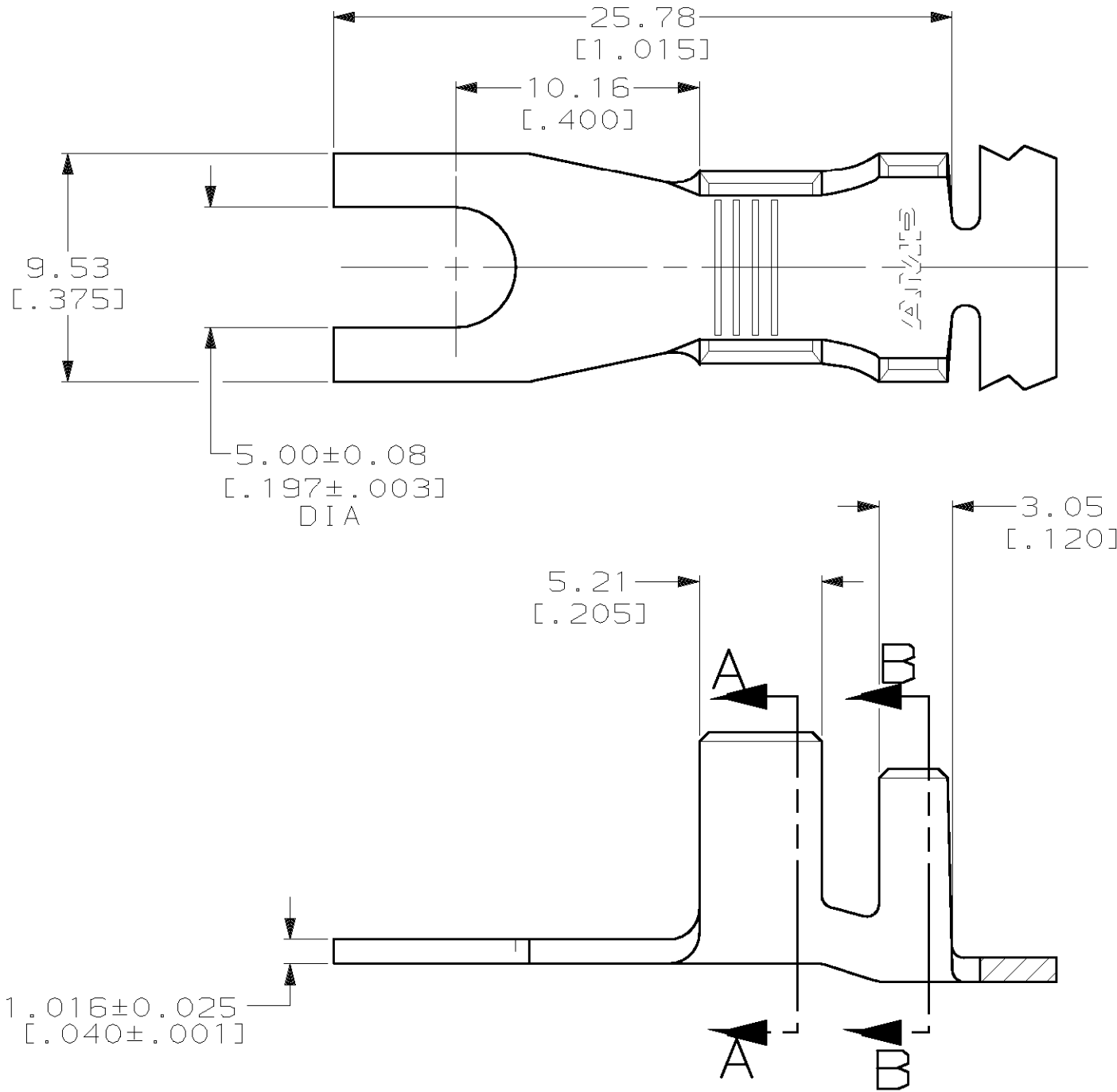
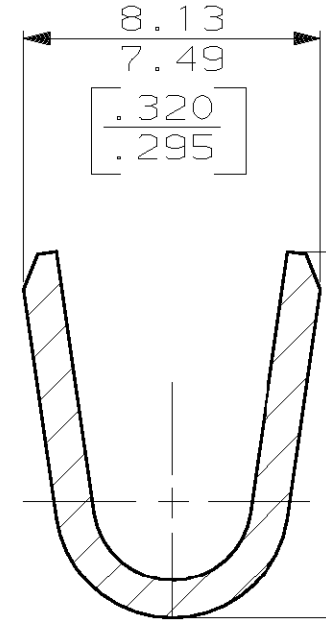


THIS DRAWING IS UNPUBLISHED. RELEASED FOR PUBLICATION, 19  
 © COPYRIGHT 19 BY AMP INCORPORATED. ALL INTERNATIONAL RIGHTS RESERVED.

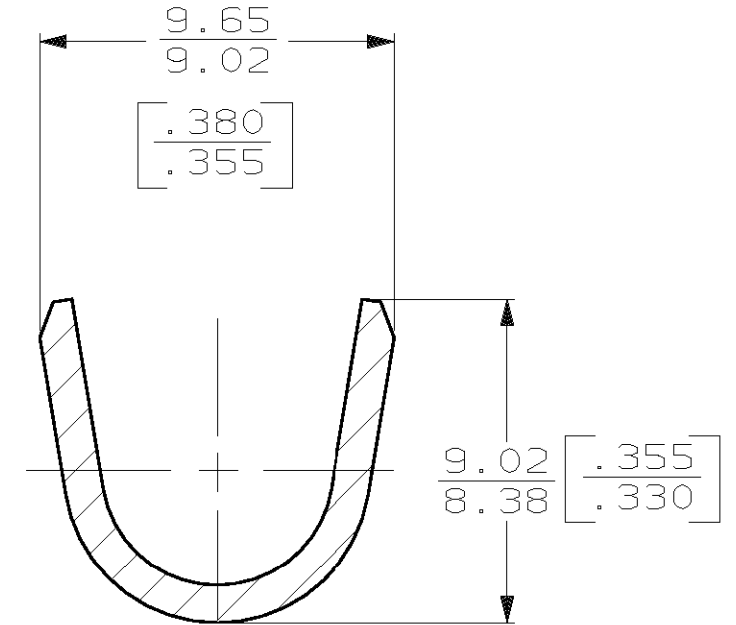
LOC	DIST	P	F	ZONE	LTR	REVISIONS	DATE	APPD
AF	50				F	REV PER 063A-0376-01	18JUN01	JR/DD



- 1 CONTINUOUS STRIP ON REEL.
- 2 0.002032 [.000080] MIN TIN PL
- 3 INSULATION RANGE IS  
 3.68-5.33 [.145-.210] FOR AN F TYPE CRIMP.  
 5.33-7.37 [.210-.290] FOR AN O TYPE CRIMP.



SECTION A-A  
 SCALE 5:1



SECTION B-B  
 SCALE 5:1

THIS DRAWING IS A CONTROLLED DOCUMENT FOR AMP INCORPORATED. IT IS SUBJECT TO CHANGE AND THE CONTROLLING ENGINEERING ORGANIZATION SHOULD BE CONTACTED FOR THE LATEST REVISION.

		3	[10-6] AWG	61855-1
	INSULATION RANGE		WIRE RANGE	PART NO
DO NOT SCALE PRINT. UNLESS SPECIFIED DIMENSIONS IN mm [INCHES] TOLERANCES ON: 2 PLC DEC ± 0.25 [.010] 3 PLC DEC ± - ANGLES ± -	DR 2/14/94 PHILLIP M FORTNEY CHK 2/14/94 JEFF RUTH APPD 2/14/94 GARY YETTER APPD 2/14/94 RON KUZO	AMP AMP Incorporated Harrisburg, PA 17105-3608		
MATERIAL 082 BRASS	PRODUCT SPEC -	NAME SPADE		
FINISH 2	APPLICATION SPEC -	SIZE B	CAGE CODE 00779	DRAWING NO C-61855
	WEIGHT -	SCALE 4:1	SHEET 1 OF 1	